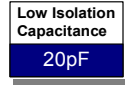


# 1.5 Watt BY-C Series



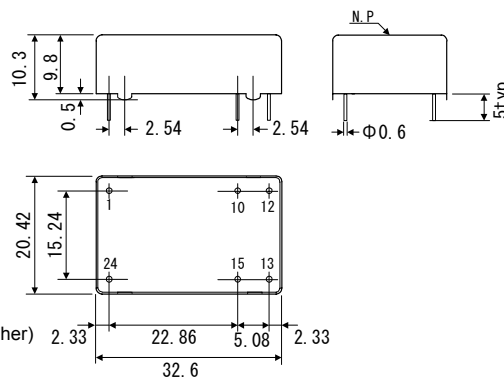
Between Primary and Secondary Low Isolation Capacitance of 20pF Isolated-Type DC-DC Converters

**Input: 5V Output: 5V, 9V, 12V, 15V, ±12V, ±15V**

- Between Primary-Secondary isolation capacitance of 20pF
- Long-Life with TCT Patent Circuit
- 24pin-DIP IC Size
- Over-Heat Protection
- No Electrolytic Capacitor, No Tantalum Capacitor
- Floating Type between Input and Output
- 5-Side Shield Structure (Electromagnetic Shield)
- EMI Line Filter
- Isolation Voltage DC500V
- Over-Current Protection
- Low Drift 50mV/8H
- Temp Coefficient ±0.02%/°C
- RoHS Compliance
- Operating Temp Range: -20°C to +70°C (Derating required for 50°C or higher)
- Additional capacitors are the same as those of BY-SL, BY-WL series.

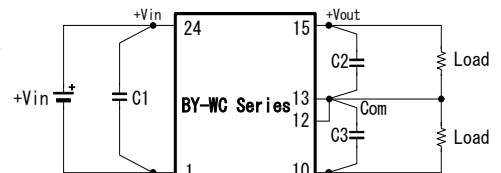
| Models<br>BY-C Series             | Input V<br>Vdc | Output V<br>Vdc | Output I<br>mA | Line Reg<br>% (max.) | Load Reg<br>% (max.) | Ripple/Noise<br>mVpp(typ.) | Efficiency<br>% (typ.) |
|-----------------------------------|----------------|-----------------|----------------|----------------------|----------------------|----------------------------|------------------------|
| BY05-05S20C                       | 4.75-6         | 5               | 0-200          | 0.2                  | 0.2                  | 100                        | 60                     |
| BY05-09S16C <small>Note 1</small> |                | 9               | 0-160          |                      |                      |                            |                        |
| BY05-12S12C                       |                | 12              | 0-120          |                      |                      |                            |                        |
| BY05-15S10C                       |                | 15              | 0-100          |                      |                      |                            |                        |
| BY05-12W06C                       |                | ±12             | ±0-65          |                      |                      |                            |                        |
| BY05-15W05C                       | ±15            | ±0-53           | 0.5            | 0.5                  |                      |                            |                        |

Note 1: BY05-09S16C is an order-received product. Note 2: Derating required for input voltage 5.25V or higher.



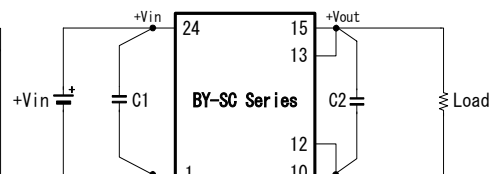
**BY-SC**

| Pin | Function |
|-----|----------|
| 1   | -Vin     |
| 10  | -Vout    |
| 12  | -Vout    |
| 13  | +Vout    |
| 15  | +Vout    |
| 24  | +Vin     |



**BY-WC**

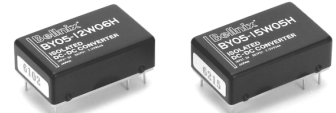
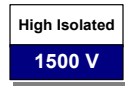
| Pin | Function |
|-----|----------|
| 1   | -Vin     |
| 10  | -Vout    |
| 12  | Common   |
| 13  | Common   |
| 15  | +Vout    |
| 24  | +Vin     |



Units: mm  
Weight: 15g typ.

- Note! This catalogue is an outline of the product. When designing, be sure to refer to the datasheet.

# 1.5 Watt BY-H Series



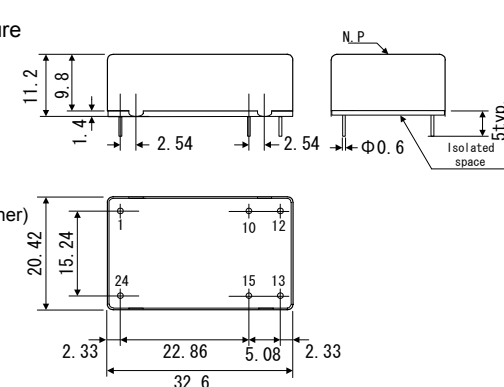
AC1500V High Isolated Type DC-DC Converter

**Input: 5V Output: 5V, 12V, 15V, ±12V, ±15V**

- Isolation Voltage AC1500V
- Long-Life with TCT Patent Circuit
- 24pin-DIP IC Size
- Over-Heat Protection
- No Electrolytic Capacitor, No Tantalum Capacitor
- Floating Type between Input and Output
- 5-Side Metallic shield structure
- EMI Line Filter
- Over-Current Protection
- RoHS Compliance
- Operating Temp Range: -20°C to +70°C (Derating required for 50°C or higher)
- Additional capacitors are the same as those of BY-SL, BY-WL series.

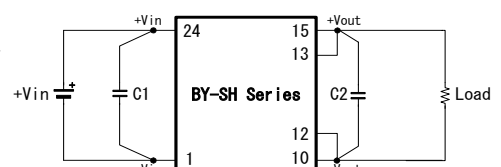
| Models<br>BY-H Series | Input V<br>Vdc | Output V<br>Vdc | Output I<br>mA | Line Reg<br>% (typ.) | Load Reg<br>% (typ.) | Ripple/Noise<br>mVpp(typ.) | Efficiency<br>% (typ.) |
|-----------------------|----------------|-----------------|----------------|----------------------|----------------------|----------------------------|------------------------|
| BY05-05S20H           | 4.75-6         | 5               | 0-200          | 0.3                  | 0.3                  | 100                        | 60                     |
| BY05-12S12H           |                | 12              | 0-120          |                      |                      |                            |                        |
| BY05-15S10H           |                | 15              | 0-100          |                      |                      |                            |                        |
| BY05-12W06H           |                | ±12             | ±0-65          |                      |                      |                            |                        |
| BY05-15W05H           |                | ±15             | ±0-53          |                      |                      |                            |                        |

Note 1: Derating required for input voltage 5.25V or higher.



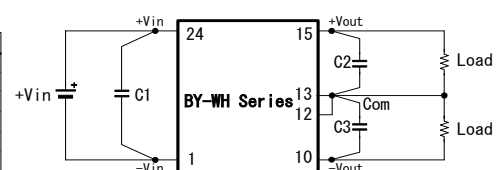
**BY-SH**

| Pin | Function |
|-----|----------|
| 1   | -Vin     |
| 10  | -Vout    |
| 12  | -Vout    |
| 13  | +Vout    |
| 15  | +Vout    |
| 24  | +Vin     |



**BY-WH**

| Pin | Function |
|-----|----------|
| 1   | -Vin     |
| 10  | -Vout    |
| 12  | Common   |
| 13  | Common   |
| 15  | +Vout    |
| 24  | +Vin     |



Units: mm  
Weight: 17g typ.

- Note! This catalogue is an outline of the product. When designing, be sure to refer to the datasheet.